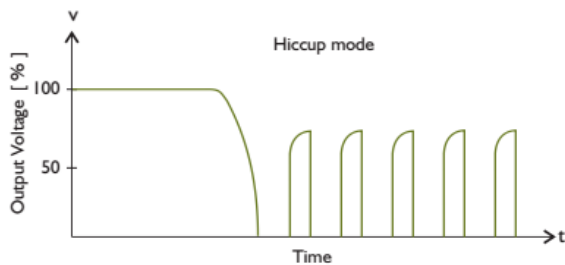
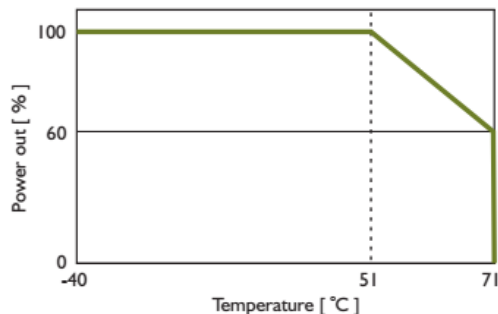


## TYP. CURRENT LIMITED CURVE



## DERATING CURVE



## TYP. EFFICIENCY CURVE

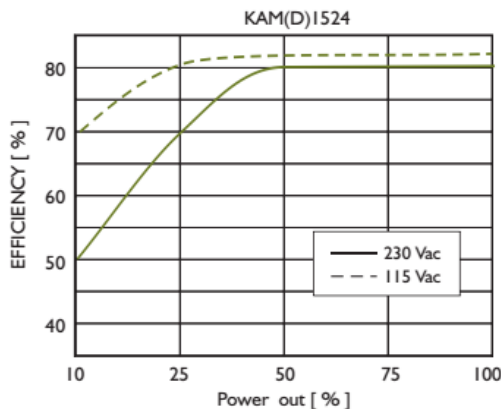


Fig. 1 Trim connection (For single output only)

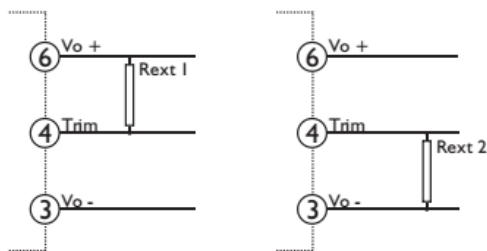


Table 1 Typical resistor values for various output voltage adjustment settings and max continuous power

Type	Rext 1		Rext 2		Max continuous power
	Vo nom -5%	Vo nom -10%	Vo nom +5%	Vo nom +10%	
KAM(D)1503	180KΩ	56KΩ	100KΩ	20KΩ	13W
KAM(D)1505	39KΩ	15KΩ	9.1KΩ	2.2KΩ	15W
KAM(D)1512	51KΩ	20KΩ	10KΩ	2KΩ	15W
KAM(D)1515	150KΩ	68KΩ	20KΩ	4.7KΩ	15W
KAM(D)1524	130KΩ	56KΩ	12KΩ	2KΩ	15W